

---

# Technical Specifications

---

California Theatre



---

345 S. First Street  
San Jose, California 95113

---

# TABLE OF CONTENTS

Overview	3
Fast Facts	3
Stage Dimensions	4
Size of Space in Front of Curtain	4
Front of House Dimensions	4
Load In	5
Stagehands	5
Stage Rigging	6-8
Curtains, Softgoods, Masking and Miscellaneous	8
Lighting	8-9
Power	9
Sound	10-11
Additional Spaces	11-14
Dressing Rooms	11-13
Wardrobe	13
Laundry Facilities	14
Makeup	14
Amenities	14
House Seating Capacities	14
Pianos	14
Odds and Ends	14
Seating Plan	15
Mezanine Level Floor Plan	16
Orchestra Level Floor Plan	16
Balcony Level Floor Plan	17
Lower Level Dressing Rooms	18
Other Addresses and Phone Numbers	19-20



## Overview

The California Theatre is one of the best examples of the Art Deco style motion picture houses from the late 1920s and adds glamour and class to any meeting, film screening, concert or private party.

The theater boasts comfortable seating and great acoustics inside the main theater and features three additional meeting rooms with state-of-the-art audio and visual technology as well as a courtyard that can be utilized for a variety of events. The theater, with its grand foyer, provides an elegant option for presentations, post meeting shows or cocktail receptions.

Located across the street from the San Jose Convention Center, the theater is within easy walking distance of several parking lots and numerous restaurants within the creative hub of Downtown known as the South First Area (SoFA) District.

## Fast Facts

- Across the street from the Convention Center
- 1,122 seating capacity, including up to 14 wheelchair seats
- State-of-the-art audio visual technology
- Home of Opera San Jose and Symphony Silicon Valley
- Built in 1927 as the Fox Theatre, a Hollywood motion picture house
- \$80 million in renovations; completed and reopened in 2004
- Ranks among the world's most intimate Opera houses
- Houses a 1927 Wurlitzer console organ with 1521 pipes plus symphonic percussion
- Perfect for film screenings, presentations, performances, cocktail receptions, concerts, weddings, etc.
- Located just 2 blocks from the Convention Center
- Easy access to parking, public transportation, hotels and restaurants

### Stage Dimensions

· Proscenium Width	43' 10"
· Proscenium Height	31' 7" at Center (Valance 25' at Center)
· Grid Height	86' 6"
· CL to Stage Left Wall	40' 7"
· Stage Left Wall to Stage Right Wall	92'
· CL to Stage Right Wall	51' 5"
· PL to House Curtain	1' 6"
· PL to US Wall (at CL)	41'
· PL to FOH Control Room	84'
· PL to Spot Booth	113' 8"

### Size of Space in Front of Curtain

· Shows 19' at Center	15' at Sides
	43' wide at Proscenium
	45' wide at Edge of Pit

### Front of House Dimensions

· Courtyard	Length: 67'1" Width: 39'1" Height: 14'8"
· 1 <sup>st</sup> Level Market Street Corridor	Length: 90'11" Width: 16'4" Height: 10'5"
· Market Street Lobby ( <i>Back Theatre Entrance</i> )	Length: 28'7" Width: 47'11" Height: 21'2"
· Mezzanine Foyer Balcony ( <i>Overlooking Market St. Lobby</i> )	Length: 53'8" Width: 9'9" Height: 9'1"
· Mezzanine Foyer/Concessions Area	Length: 103'0" Width: 21'2" Height: 13'2"
· Main Theatre Lobby ( <i>1<sup>ST</sup> Street</i> )	Length: 78'3" Width: 26'4" Height: 28'3"

## Load In

Dock Entrance Located At: 344 South Market Street  
San Jose, California 95113

Street Level load in, then down ramp. No truck height dock. No Truck loading ramp available.  
Loading Door at Street: 12'-0" W x 14'-6" H. Loading Dock area: Off stage right 26' x 60'. Loading  
Door at Stage: 13'-11" W x 17'-11" H.b. 1- ton stacker motor in Loading dock area  
Note: A 24' Bobtail may be backed into the dock area.

It should also be noted that the street outside our loading door is State HWY 82. This means that additional restrictions as far as parking, lane blockage, etc apply. If you anticipate anything in special needs, you should be in touch with us WELL in advance. In some cases we can accommodate you, however State Highway restrictions are rather strict.

## Stagehands

General Guideline of Rates and Conditions:

- Concerts and entertainment: Load In is a 4 hour minimum. Performance Call which commences 30 minutes prior to curtain and ends 3.5 hours after curtain or you shall be billed on the hour for OT. Load Out is a 4 hour minimum or 3 hours if one worked the show call.
- Lectures, corporate parties, commercial and industrial events, trade shows, computer generated presentations, as well as audio and/or video recording, where the product is to be sold to the attendees or the general public. 8 Hour minimums for everyone but loaders who have 5 hour minimums.
- There shall be a buyout fee associated with events for broadcast, webcast, simulcast, or other commercial distribution in the amount of 8 hours regular time for everyone on the call during the actual event.
- Stagehands break for 15 minutes after 2 continuous hours worked and break for meal after 5 hours worked. Work on stage shall cease for 1 hour during non-paid one hour meal breaks. 30 minute meal breaks shall be paid and the stage hands shall have their meal provided for them by the client. Meal penalty is two times the prevailing rate. Returning from a 1 hour meal break a stagehand receives a 2 hour minimum.
- Work between the hours of Midnight and 7am shall be paid at double time.
- There shall be department heads for Sound, Electrics, Video, and Carpentry. The steward is above the call. Standard union rules apply.

## Stage Rigging

Type: Single purchase counterweight. 60,000 lbs available

Line Sets 59 sets on 6" or 8" centers  
 Side ladders 2' offstage of pipe ends  
 Tab Pipes 2' offstage of ladders

House pipes 63' schedule 80  
 In trim 4'-0" above deck All trims measured to bottom of pipe  
 Out Trim 6" 74'-6" above deck  
 Out Trim 8" 81'-4" above deck  
 Travel 6" 70'-6" above deck  
 Travel 8" 77'-4" above deck

House sets are not kickable, however roller diverters are workable. None in stock at present.  
 25 Spot wheels, plus head and muling blocks available, with 5/8" Multiline II for 5 hemp sets available.  
 No hemp, all Dacron/ cotton blend (Multiline II)  
 1500 feet loose line available.

Sweeps available for full wrap cyclorama, work with tab pipes and lineset 59. This is a MAJOR PROJECT, but is doable with advance notice.

LINE	DEPTH	PIPE TO PIPE	PIECE	TRIM	NOTES
AP-2	2'-5"		SUPERTITLE SCREEN		
AP-1	1'-11"		MAIN VALANCE		
Smoke Pocket	0-0"				
1	0'-8 1/2"				
2	1'-6"		MAIN CURTAIN		
3	2'-2"		ZETEX		
4	2'-8"		1ST ELECTRIC		
Projection Screen	3'-11"		MOVIE SCREEN		Doesn't kick - out trim is 55'-2" to BOTTOM
5	5'-0"		BORDER		
6	5'-5"		LEGS		
7	5'-11"				
8	6'-4"				
9	6'-11"				
10	7'-5"				
11	7'-11"				
12	8'-5"				
13	9'-0"				
14	9'-6"				
Purlin	10'-0"				Cannot hang at purlin
15	10'-6"		BORDER		

16	11'-3"		LEGS		
17	11'-11"				
18	12'-8"				
19	13'-3"				
20	13'-11"				
21	14'-7"				
22	15'-3"				
23	15'-11"				
24	16'-7"				
25	17'-6"		BORDER		
Purlin	18'-0"				Cannot hang at purlin
26	18'-6"		LEGS		
27	19'-4"		MID STAGE TRAVELLER		
28	20'-0"				
29	20'-8"				
30	21'-4"				
31	21'-11"				
32	22'-7"				
33	23'-3"				
34	23'-11"				
35	24'-7"		BORDER		
36	25'-5"		LEGS		
Purlin	26'-0"				Cannot hang at purlin
37	26'-6"				
38	27'-4"				
39	27'-11"				
40	28'-7"				
41	29'-4"				
42	29'-11"				
43	30'-8"				
44	31'-3"				
45	31'-11"		BORDER		
46	32'-7"		LEGS		
47	33'-6"				
Purlin	34'-0"				Cannot hang at purlin
48	34'-4"				
49	35'-0"				
50	35'-5"				
51	36'-0"				

52	36'-6"				
53	36'-11"				
54	37'-5"				
55	37'-11"				
56	38'-5"				
57	39'-0"				
58	39'-6"		UPSTAGE TRAVELLER		
59	40'-6"		WHITE LENO CYC		

### Curtains, Soft Goods, Masking and Miscellaneous

10 Black Velour Legs 13'-9"w x 28'h  
 1 Black Velour Border 12'-0"h x 95'-0"w  
 5 Black Velour Borders 8'-0"h x 95'-0"w  
 8 Black Velour Tabs 6'-5"w x 32'-0"h  
 2 Full stage Travellers each 33'-6"h x 56'-0"w  
 1 White Leno Bounce/ Cyclorama 30'-0"h x 63'-0"w  
 1 Black Sharkstooth Scrim 30'-0"h x 63'-0"w

Hang varies widely and rarely stays the same for more than one event, please call ahead for current information.

#### *Main Curtain*

Traveler type or guillotine.

### Lighting

ETC Source 4 ellipsoidals- All 575w  
 5° 15  
 10° 21  
 15-30° Zoom 14  
 19° 111 Plus 20 Barrels  
 26° 162 Plus 25 Barrels  
 36° 142 Plus 25 Barrels  
 50° 20 Plus 10 Barrels

8 each ETC Source 4 Revolution 750w  
 Incl. Standard ETC color string  
 8 shutter modules  
 8 static Gobo modules  
 4 Rotating/Indexing Gobo modules  
 4 Iris modules  
 1k Fresnels  
 30 Desisti Monet  
 2k Fresnels  
 30 Desisti Monet



*Pars*

74 each Source 4 575w  
All include full lens kit (vn-wide)  
10 Parnel 575w (usually work lights)  
Striplights  
9 each 6' L & E 3 circuit- 750w per circuit/unit  
Cyc Fixtures  
16 each Altman Focusing cyc fixtures- three to a cluster  
3 circuit, 1kw each ckt

*Followspots*

Lycian 1290 XLT 2KW Xenon; 2 each Not Removable  
Followspot booth doubles as projection booth- room for two followspots, additional room outside booth for two additional spots.

Booth Power            4 each 30A Single Phase Twistlocks/ Breakers

Projectors are NOT movable, for any reason. Do not expect to use those ports for any other equipment.

<u>California Equipment Rental Cost</u>	<u>Savings 1 Day</u>	<u>25% 2 days</u>	<u>40% 3 Days</u>	<u>70% 7 Days</u>
Lighting 1-39 Fixtures	950.00	1,425.00	1,710.00	1,995.00
Lighting 40-60 Fixtures	1,100.00	1,650.00	1,980.00	2,310.00
Lighting 61-120 Fixtures	1,500.00	2,250.00	2,700.00	3,150.00
Lighting 121-230 Fixtures	2,500.00	3,750.00	4,500.00	5,250.00
Each Moving Light (up to 8 when available)	90.00	135.00	162.00	189.00
Spot Light	150.00	225.00	270.00	315.00

Power

2 - 400amp 3 phase Up stage right  
1 - 225 amp 3 phase (isolated) up stage right  
1 - 250 amp 3 phase Up stage left

## Sound

### Console

Yamaha O2R96V2

56 Inputs

8 Outputs

99 Scene Memory

All digital

Speakers

No Cluster at this time

Portable Full range and Subs, all EAW

2 EAW FR153z Subs

EAW 695 (one a side and 2 for a center cluster)

Processing

Stereo System

Klark Teknik 1/3 Octave EQ

Klark Teknik DM 410 Parametric EQ

DBX 1066 Compressors

Lexicon PCM 81 (x2)

Tascam MX2424 8 Track Hard Drive

Roland AR 200 Flash Card Recorder

Tascam 112 mk2 Cassette Deck (x2)

Tascam MD 350 Mini Disk deck (x2)

Tascam DA20 mk2 DAT (x2)

Tascam CD 450 CD player (x2)

HHB CDR 830 CDR/CDRW

### Communications

Clear- Com 4 channel headset system

Telex Wireless system, 4 belt packs

Catwalk Announce

Tech and dressing area page and monitor system

Lobby announce and page system

### Road Console

House mix position located off center house right or left in front of cross aisle. Also available with more seats affected is center house, remove 12 seats plus shadow behind mix. Alternate location rear of house which would entail more seats removed. Cable run to Stage is 250' from Control Room/ Rear of House, 200' from Center of House.

Tie in to house system via XLR connectors

Plenum access requires seat removal.

### Tie Lines

Extensive audio and video tie lines are available. All audio are Lo z balanced, very high quality, may be used as mic or line level.

ADD PINOUT ON XLR-3

All video tie lines are RG 6 equivalent or better.  
 Audio/ Video patch bays in control room at rear of orchestra.

<u>California Equipment Rental Cost</u>	<u>1 Day</u>	<u>2 days</u>	<u>3 Days</u>	<u>7 Days</u>
Sound	1,000.00	1,500.00	1,800.00	2,100.00
Video Projector 5k	250.00	375.00	450.00	525.00
Each Camera (up to 3)	Venue does not own any			

## Additional Spaces

### *Dressing Rooms*

The California is well equipped with dressing rooms. However, they are split between the basement and the second floor. As with load in, you should plan for your cast to take a little time to get on stage. This is probably a good time to emphasize that the backstage elevator is SLOW and your cast should not count on it in a rush situation. Besides, they need the exercise, right? Seriously, the elevator is rather high capacity, and that means very slow speed. Cast should plan on using the stairs if at all possible.

### LOWER LEVEL DRESSING ROOMS

#### Make-Up Room LL-30

- Width 17' 9" – Length 29' 4"
- Seats 27 People
- 2 Make-up counter
- 2 Shampoo backwash units

#### Dressing Room LL-45

- Width 14' 10" – Length 34' 6"
- Seats 12 people
- Restroom provided (2 sinks, 2 showers and 2 toilets)
- 2 Make-up counter

#### Dressing Room LL-46

- Width 15' 2" – Length 34' 6"
- Seats 12 People
- Restroom provided (2 sinks, 2 showers and 2 toilets)
- 3 Make-up counter

#### Dressing Room LL-48

- Width 16' 1" – Length 34' 6"
- Seats 12 people
- Restroom provided (2 sinks, 2 showers and 2 toilets)
- 2 Make-up counter

Dressing Room LL-49

- Width 10' 10" – Length 29' 3"
- Seats 6 people
- Restroom provided (Shower, Sink and toilet)
- Make-up counter
- Costume rack provided

Dressing Room LL-50

- Width 10' 10" – Length 29' 2"
- Seats 4 people
- Restroom provided (shower, sink and toilet)
- Make-up counter
- Costume rack provided

Dressing Room LL-55

- Width 20' 0" – Length 24' 2"
- Seats 4 people
- Restroom provided (shower, sink and toilet)
- Make-up counter
- Costume rack provided

Dressing Room LL-56

- Width 12' 4" – Length 12' 1"
- Seats 4 people
- Restroom provide (shower, sink and toilet)
- Make-up counter
- Costume rack provided

Musicians Room LL-59

- Width 25' 11" – Length 30' 11"
- Seats 20 People
- Lockers Provided
- Both men's and women's restroom provided
- Kitchenette provided (microwave, sink and refrigerator)

LEVEL 2 DRESSING ROOMS

Dressing Room 227

- Width 11' 0" – Length 19' 10"
- Seats 4 people
- Restroom provided (shower, sink and toilet)
- Leather couch
- Make-up counter
- Costume rack provided

Dressing Room 228

- Width 10' 11" – Length 24' 0"
- Seats 4 people
- Restroom provided (shower, sink and toilet)

- Make-up counter
- Leather couch
- Costume rack provided

#### Dressing Room 229

- Width 10' 10" – Length 18' 3"
- Seats 4 people
- Restroom provided (shower, sink and toilet)
- Make-up counter
- Costume rack provided

#### Dressing Room 231

- Width 10' 7" – Length 18' 3"
- Seats 4 people
- Restroom provided (shower, sink and toilet)
- Costume rack provided

#### Wardrobe Room 232

- Width 8' 4" – Length 13' 2"
- Seats 2 or 3 people
- Table and chair provided
- Wardrobe mirror

#### Dressing Room 233

- Width 8' 6" – Length 24' 0"
- Seats 3 people
- Restroom Provided (shower, sink and toilet)
- Make-up counter
- Costume rack provided
- Leather couch

#### *Wardrobe*

The wardrobe room (shop) is on the ground floor, near the stage. The shop is quite spacious, and has a separate laundry room with sorting space. It contains two commercial dryers (laundromat style) and one very large commercial front loader washer (comforter/ carpet size). There is room in front of the slop sink to add a second consumer washer, however we do not have one in stock. You can rent one locally. Water and electric hookups are present.

The theatre does not own steamers/irons/boards, laundry carts, etc.

N.B.: All dressing rooms are accessed by a SLOW elevator or stairs. Two or three rolling racks/gondolas will fit in the elevator, but you should plan your time accordingly

The backstage freight elevator is a hospital gurney type, with an interior measuring approximately 6' x 8'. Capacity 10000 lbs speed very slow.

### Laundry Facilities

1 large commercial washer

2 large commercial dryers

Can accommodate 1 additional domestic washer in addition.

Counter space, however no other equipment.

### Makeup

The California has a large makeup room in the basement, just down the hall from the main dressing room area. It has room for approximately 8-10 stations, as well as hair sinks, color corrected lighting, continuous mirrors and ample counter space. There are electric outlets on the countertop at each station, as well as wall outlets

### Amenities

All dressing rooms are heated/air conditioned, with full counters, full mirrors, color corrected lighting, electric outlets on the counters, lockable drawers (bring your own padlock), chairs, rolling rack space (no hanging capacity- racks only), bathrooms, showers and vinyl floors. All dressing rooms are ADA compliant

### House Seating Capacities

· 1,122 seating capacity including up to 14 Wheelchair seats

· 687 Orchestra seats (677 Fixed and up to 10 Wheelchair seats included)

· 196 Mezzanine seats (192 Fixed and 4 Wheelchair seats included)

· 239 Grand Tier seats

### Pianos

House does not own a piano.

### Odds & Ends

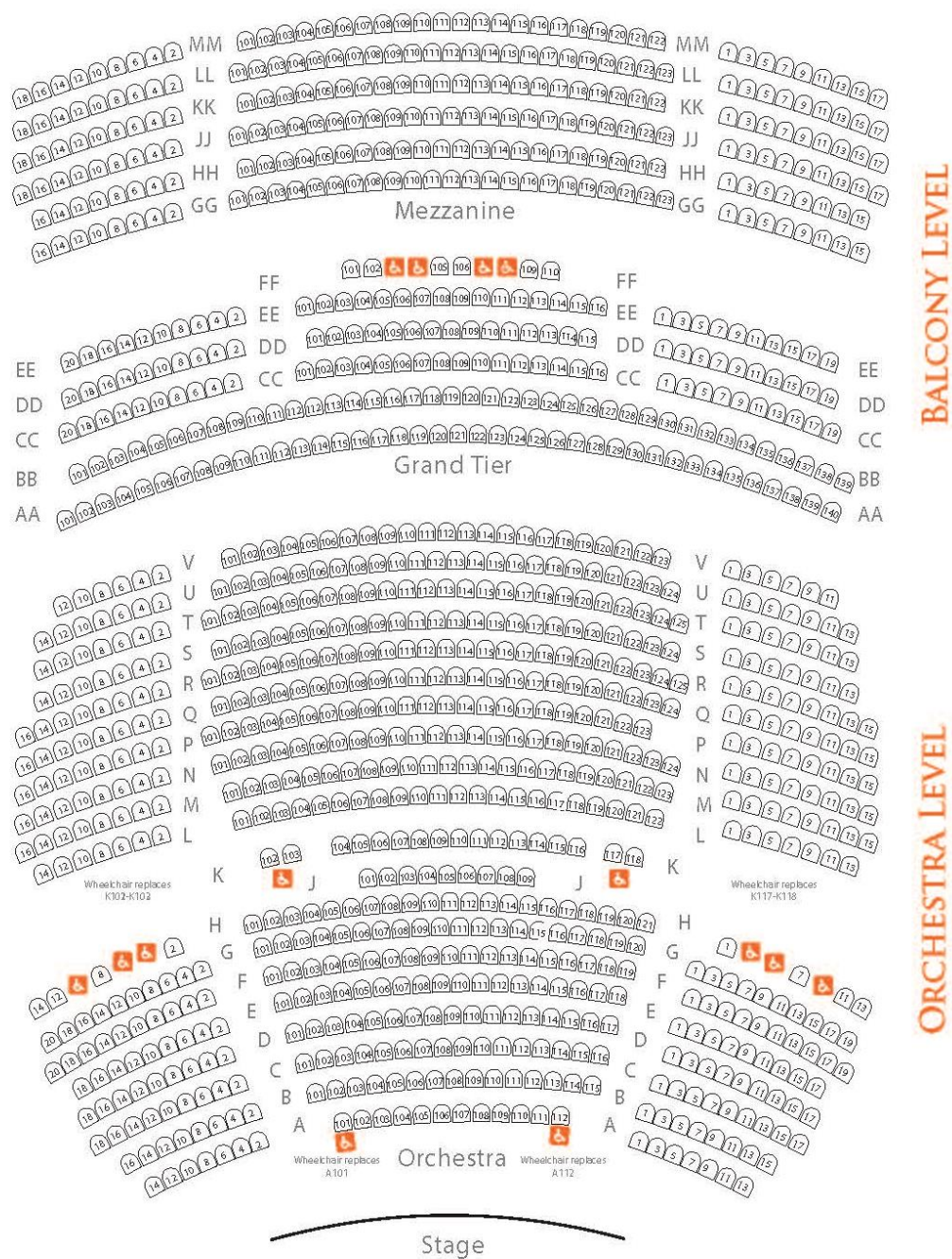
Storage and Rehearsal areas

Loading dock area is 26' x 60' concrete floor, off SR

Rehearsal Hall on 3rd floor- 37'-3" x 47'-8"

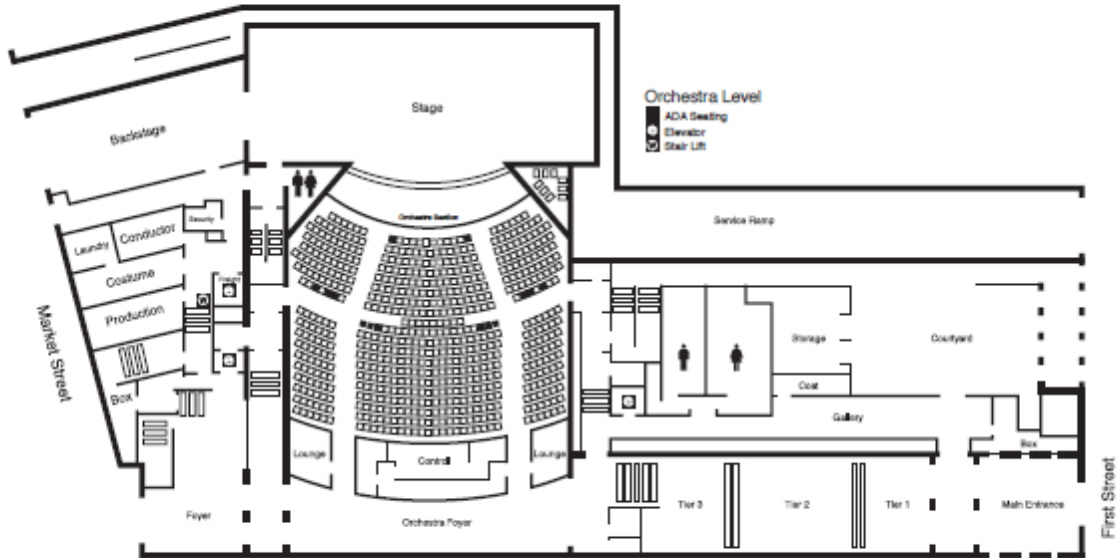
Hall is equipped with a sprung hardwood floor, lighting and sound equipment.

# SEATING PLAN

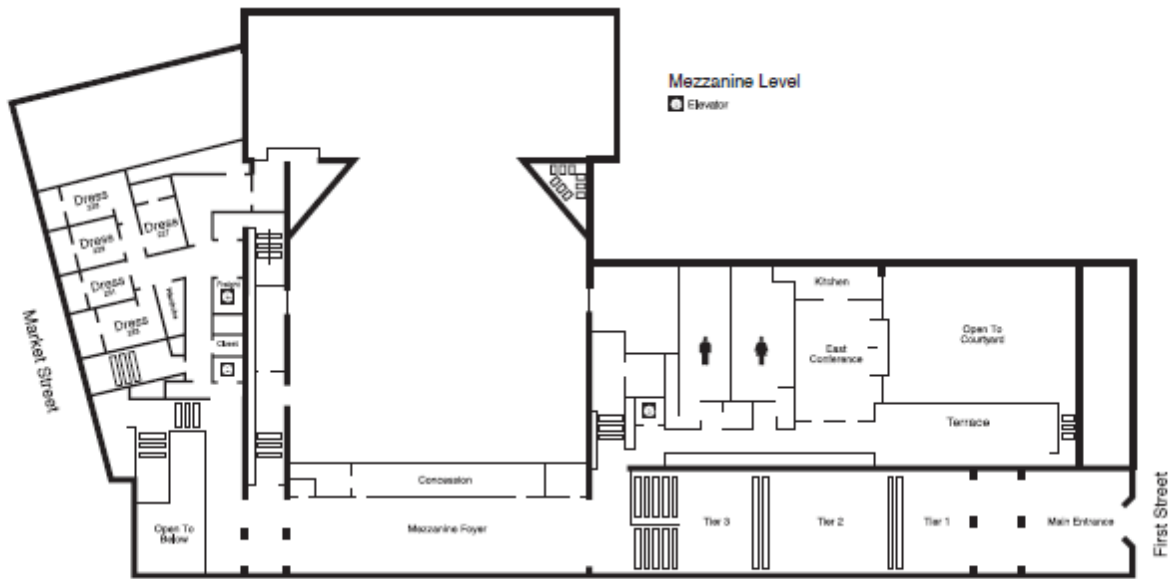


Location	Capacity	Orchestra Level Seating Capacity	Balcony Level Seating Capacity (Grand Tier & Mezzanine)	Grand Tier Level Seating Capacity	Mezzanine Level Seating Capacity	Stage Size (W x D)	Active Stage Area	Stage Proscenium Opening (W x H)
California Theatre	1,122 Total 1,108 Fixed 12-14 Wheelchair areas	687 Total, 679 Fixed 8 Wheelchair areas (Fixed seats K101-K102, K118-K119, A101& A112 can be removed to accommodate an additional wheelchair on each side)	435 Total 431 Fixed 4 Wheelchair areas	196 Total 192 Fixed 4 Wheelchair areas	239 Fixed	90' x 40'	60' x 40'	31' 6" x 44'

## ORCHESTRA LEVEL



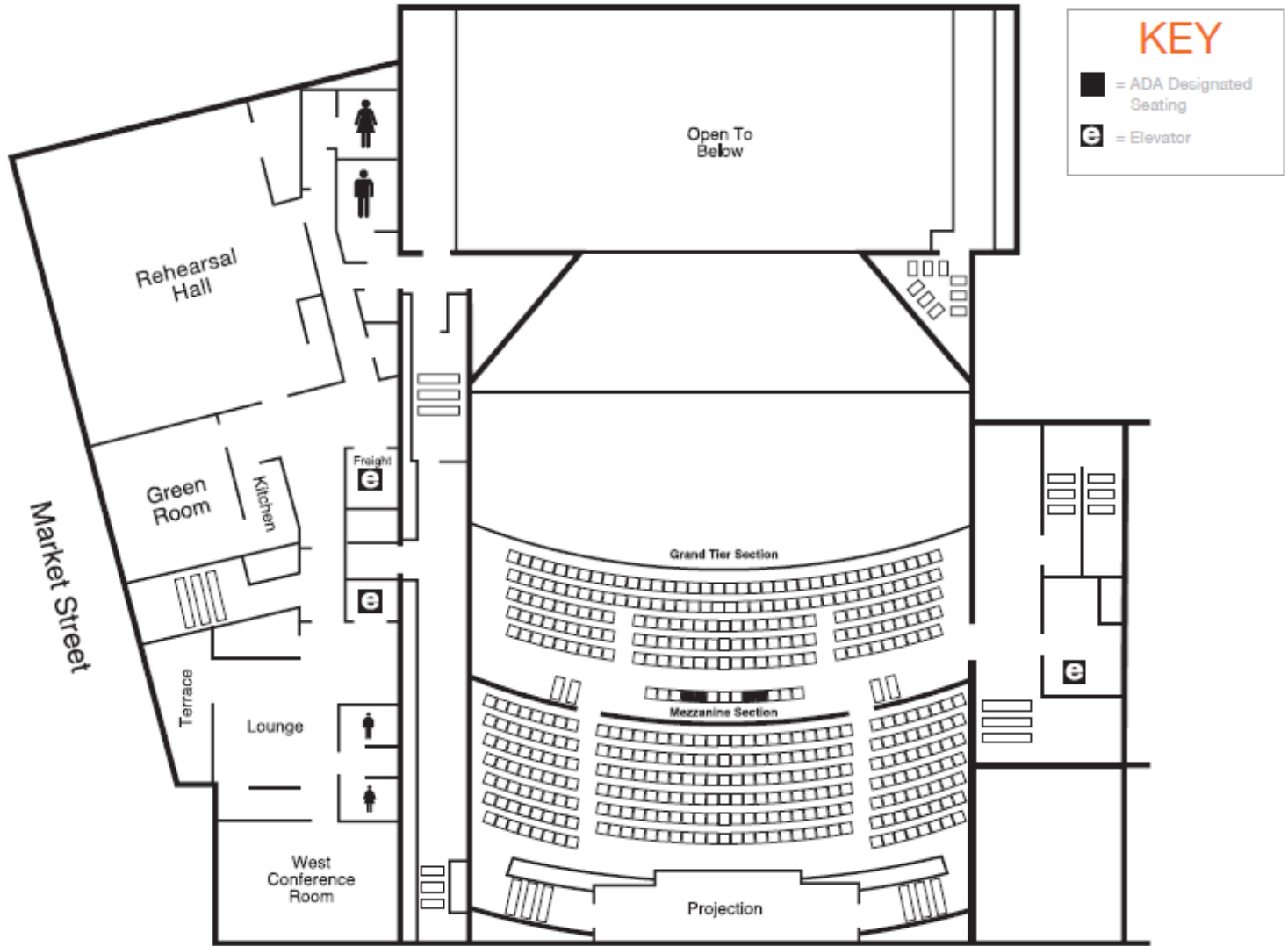
## MEZZANINE LEVEL



Location	Capacity	Orchestra Level Seating Capacity	Balcony Level Seating Capacity (Grand Tier & Mezzanine)	Grand Tier Level Seating Capacity	Mezzanine Level Seating Capacity	Stage Size (W x D)	Active Stage Area	Stage Proscenium Opening (W x H)
California Theatre	1,122 Total 1,108 Fixed 12-14 Wheelchair areas	687 Total, 679 Fixed 8 Wheelchair areas (Fixed seats K101-K102 & K118-K119 can be removed to accommodate an additional wheelchair on each side)	435 Total 431 Fixed 4 Wheelchair areas	196 Total 192 Fixed 4 Wheelchair areas	239 Fixed	90' x 40'	60' x 40'	31' 6" x 44'

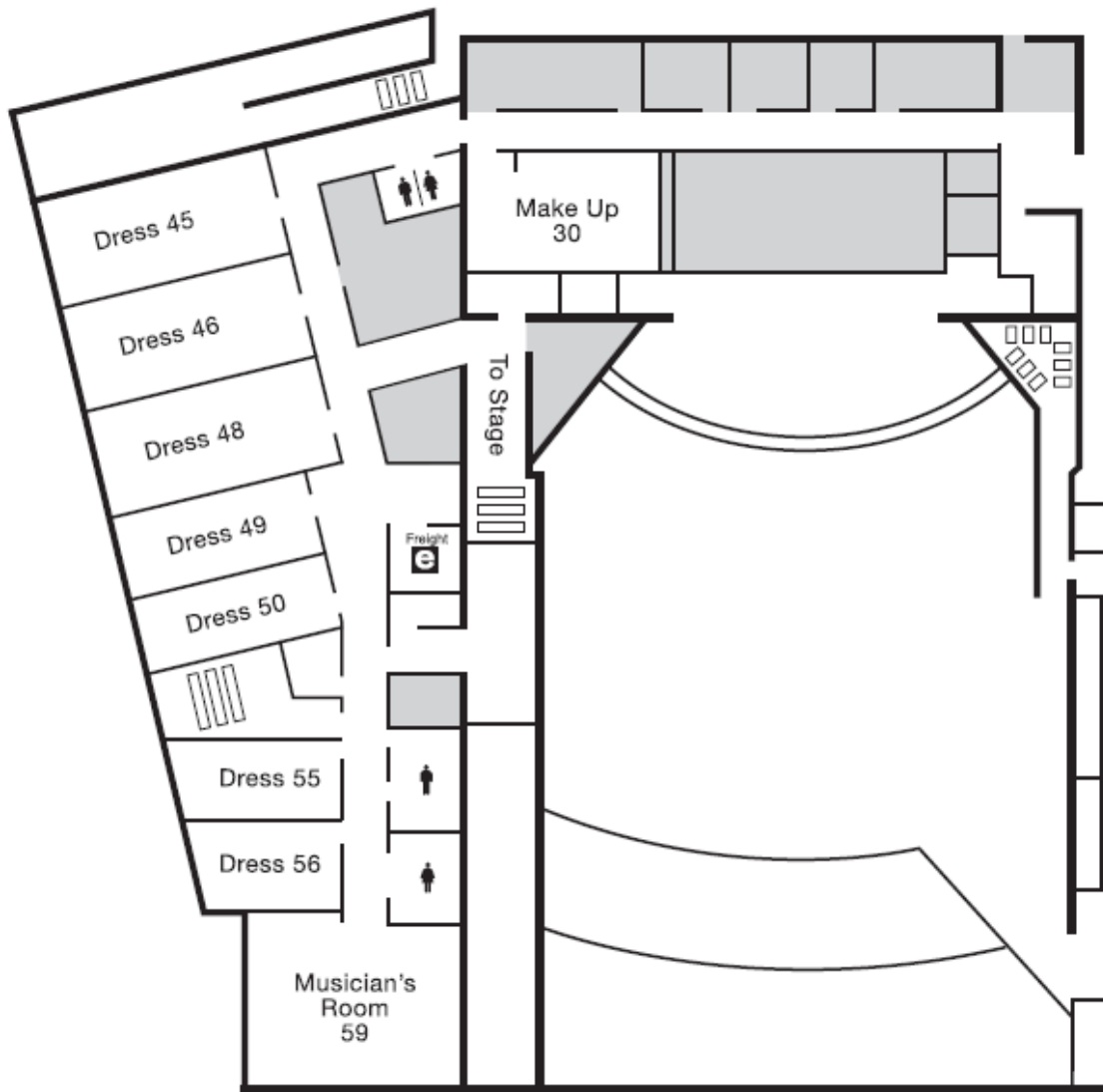


# BALCONY LEVEL



Location	Capacity	Orchestra Level Seating Capacity	Balcony Level Seating Capacity (Grand Tier & Mezzanine)	Grand Tier Level Seating Capacity	Mezzanine Level Seating Capacity	Stage Size (W x D)	Active Stage Area	Stage Proscenium Opening (W x H)
California Theatre	1,122 Total 1,108 Fixed 12-14 Wheelchair areas	687 Total, 679 Fixed 8 Wheelchair areas (Fixed seats K101-K102 & K118-K119 can be removed to accommodate an additional wheelchair on each side)	435 Total 431 Fixed 4 Wheelchair areas	196 Total 192 Fixed 4 Wheelchair areas	239 Fixed	90' x 40'	60' x 40'	31' 6" x 44'

## LOWER LEVEL DRESSING ROOMS



■ Non-client facing operations

Location	Capacity	Orchestra Level Seating Capacity	Balcony Level Seating Capacity (Grand Tier & Mezzanine)	Grand Tier Level Seating Capacity	Mezzanine Level Seating Capacity	Stage Size (W x D)	Active Stage Area	Stage Proscenium Opening (W x H)
California Theatre	1,122 Total 1,108 Fixed 12-14 Wheelchair areas	687 Total, 679 Fixed 8 Wheelchair areas (Fixed seats K101-K102 & K118-K119 can be removed to accommodate an additional wheelchair on each side)	435 Total 431 Fixed 4 Wheelchair areas	196 Total 192 Fixed 4 Wheelchair areas	239 Fixed	90' x 40'	60' x 40'	31' 6" x 44'

## Other Addresses and Phone Numbers

**Limo & Towncar Service**      *Addis Limo*      (866) 813-5466  
[www.addiscarservice.com](http://www.addiscarservice.com)

**Taxi Companies**      *Yellow Cab*      (408) 561-7300  
[www.yellowtaxicab.biz](http://www.yellowtaxicab.biz)

**Bus Services**      *VTA*      (408) 321-2300  
[www.vta.org](http://www.vta.org)

**Lightrail Stop Map/ Info**      [http://www.vta.org/schedules/schedules\\_bymap.html](http://www.vta.org/schedules/schedules_bymap.html)

**Local Parking**      The California Theatre is located in downtown San Jose, where parking can be found at a number of lots. Please visit the following link for parking rates and information:  
<http://www.sanjose.org/content/downtown-san-jose-parking-and-maps>

**FedExKinko's**      93 E. San Carlos St.      (408) 295-4336

**Shopping**      *Valley Fair Mall*      (408) 248-4451  
 2855 Stevens Creek Blvd.  
 Santa Clara Ca, 95050-6709  
<http://westfield.com/valleyfair/>

*Santana Row*  
 3055 Olin Ave.  
 San Jose, CA 95128      (408) 551-4611  
<http://www.santanarow.com/>

**Movie Theaters**      *Camera 12*      (408) 998-3300  
 201 South Second St.

*Camera 3*      (408) 294-3334  
 288 Second St.

**Restaurants**      There are many fine restaurants within walking distance.  
 The site below is for SanJose.org, and gives a comprehensive list of restaurants, their address, type of cuisine offered, as well as links to maps:  
<http://www.sanjose.org/plan-a-visit/dining-nightlife>

### Restaurants

#### Open After 10pm

*Original Joe's*  
 301 S. First St.  
 (408) 292-7030

*Henry's Hi-Life*  
 301 West St. John St  
 (408) 295-5414

*La Pastaia (Hotel DeAnza)*  
 233 W. Santa Clara St.  
 (408) 297-6785

*Gordon Biersch*  
 22 E. San Fernando St.  
 (408) 297-6785

*Affinity (Hilton)*  
 300 Almaden Blvd.  
 (408) 287-2100

*Il Fornaio (Hotel St. Claire)*  
 302 S. Market St.  
 (408) 271-3366

<b>Food Delivery</b>	<i>Sonoma Chicken Coop</i> 31 N. Market St. San Jose, CA 95113 (408) 287-4098	<i>Pita Pit</i> 151 South 2nd St. San Jose, CA 95113 (408) 694-3200	<i>Pizza Chicago</i> 155 W. San Fernando St. San Jose, CA 95113 (408) 283-9400
<b>Coffee</b>	<i>Starbucks</i> 101 E. Santa Clara St. (408) 286-0577	<i>Caffe Frascati</i> 315 S. First St. (408) 287-0400	<i>Peet's Coffee &amp; Tea</i> San Jose Convention Center
<b>Groceries</b>	<i>Safeway</i> 1300 W. San Carlos St. (408) 882-0999	<i>The Market by Safeway</i> 100 S. 2 <sup>nd</sup> St. (408) 292-4010	
<b>Laundromat</b>	<i>Quick Wash Laundry</i> 485 E. San Carlos St. San Jose, CA 95112 (408) 995-0895	<i>Keyes Laundromat &amp; Pure Water</i> 454 Keyes St. San Jose, CA 95112 (408) 995-6992	
<b>Post Office</b>	105 N. First St. (408) 292-0487		
<b>Gyms</b>	<i>24 Hour Fitness</i> 1531 Parkmoor Ave. (408) 295-6666	<i>Bally Total Fitness</i> 150 S. 1 <sup>st</sup> St. (408) 924-0500	
<b>Yoga</b>	<i>Downtown Yoga Shala</i> 450 S. First St. (408) 885-1000		
<b>Banks</b>	<i>Bank of America</i> 125 S. Market St. San Jose, CA 95113 (408) 277-7433	<i>Wells Fargo</i> 60 S. Market St. #900 San Jose, CA 95113 (408) 947-7343	<i>Citi Bank</i> 10 Almaden Blvd. #100 San Jose, CA 95113 (408) 298-1300
	<i>Chase Bank</i> 55 W. Santa Clara St. San Jose, CA 95113 (408) 291-3331	<i>Bank of the West</i> 50 W. San Fernando San Jose, CA 95113 (408) 947-5005	<i>US Bank</i> 1099 Lincoln Ave. San Jose, CA 95125 (408) 287-2710
<b>Pharmacy</b>	<i>Walgreens Drug Store</i> 5 S. 1 <sup>st</sup> St. San Jose, CA 95113 (408) 283-0835		